

# H.264 Megapixel IP Camera Quick User Guide

## 1. IP Camera Application Diagram



## 2. IP Camera Connectors

### 2 IP Camera Connectors

#### 2.1 Power Input

Connection with power adapter, DC12V 1A

#### 2.2 RJ45 LAN port

10/100M adaptive RJ45 network cable interface, which could be connected to all network devices, such as switch, routers, etc.

Green: Power indicator; Normal: lights all the time  
Yellow: Network Signal; Normal: blinking



## 3. IP Address Search

Factory default settings of the IP Camera:

IP address: 192.168.1.10

Subnet Mask: 255.255.255.0

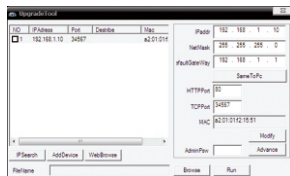
Gateway: 192.168.1.1

User name: admin

Password: no password

Step1: Search IP Address

Step2: Modify IP address(make sure the IP camera and the computer in the same Network segment in one LAN)



## 4. IE Preview

4.1 Input IP address:192.168.1.10

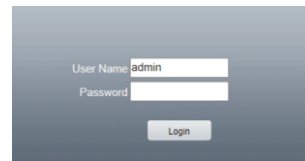
(default) User name :admin

Password : (no password)

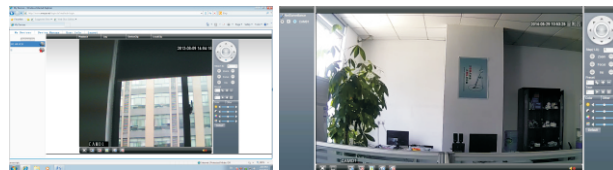
After login, you need install the player

(ActiveX controller)

to display the camera image



4.2 After Login, you will get the below image:



## 5. CMS Preview

Install CMS3.0, run it, default

user name: admin,

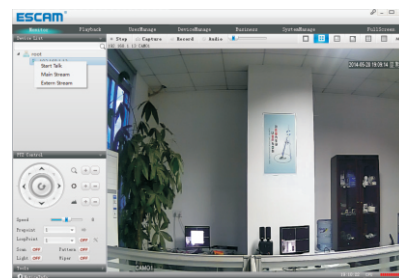
password:123456



### 5.1 Add IP camera

5.1.1 Click "DeviceManage" button, **DeviceManage**,

5.1.2 Click "AutoSearch" button **AutoSearch**, get the IP cameras list in network. Select one IP camera, Click **AutoSearch**, then you will get the IP camera image as below:



## 6. Mobile Preview

6.1 Mobile preview APP Name: vMEyeCloud Lite  
Support iPhone/Android smart phone

6.2 "vMEyeCloud Lite" APP support p2p function and QR Code Scan

6.2.1 Download P2P APP from Apple or Android APP Store

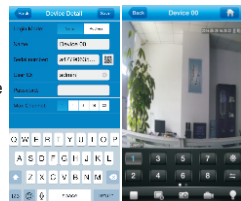
6.2.2 Open "vMEyeCloud Lite" APP on your mobile

6.2.3 Select by "By Device" Input the P2P UID code by below two ways:

6.2.3.1 Manually input the P2P UID

6.2.3.2 QR Code Scan

6.4 Input the User ID and password, and click "save", then you will get below image:



## 7. Cloud Preview

The cloud website is :<http://xmeye.net>, as shown below:



### 7.1 By user

By User By Device

Login And Preview

Username QDIPC002

Password \*\*\*\*\*

verify 3443

☒ Remember

Login Enter Guide

Please Click "Enter Guide" if you visit first.

Register Download Get Password

7.1.1 Click "Register" to register one account, input the info as shown below:

Username QDIPC002

True Name QDIPC002

Sex Male

Contact QDIPC002

Address Shenzhen China

E-mail davis001@gmail.com (You can get your password back by the E-Mail)

Password \*\*\*\*\*

Confirm \*\*\*\*\*

OK Cancel

7.1.2 Add IP camera under your account:

Select "Device Manage", click "add" button to add IP camera as below:

SerialNo. a47790635e72b1e8

Device Name QDIPC

Username admin (default is "admin")

Password (default is null)

OK Cancel

7.1.3 Preview IP Camera in Cloud website:

Double click QDIPC002, select "main Stream/Extra Stream"

IP Rate Type

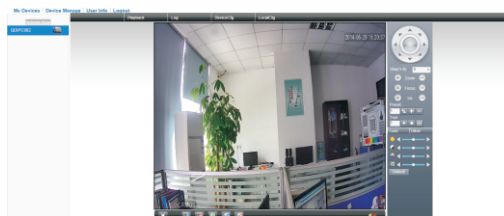
☒ Connect all video(Main Stream)

☐ Connect all video(Extra Stream)

☒ Auto Prompt

OK Cancel

Then you will see the IP camera image as shown below:



7.2 By Device

By User By Device

Login And Preview

id a47790635e72b1e8

verify 3443

Login Enter Guide

Please Click "Enter Guide" if you visit first.

Input the P2P ID and verify code, click "Login", then you can get below image

