

FAQ for QD IP Camera

Table of Contents


1.How to do Digital Zoom in IE?	2
2. How to setup OSD in IE?	3
3.How to setup Privacy Mask Area in IE?	5
4. How to setup Motion Detection in IE?	9
4.5 Motion Detection trigger alarm output.....	12
4.6 Motion Alarm Email Alert Setup	12
4.7 Motion Alarm Email Alert attached alarm snapshot	15
5. How to Enable 3D Digital WDR in IE?.....	18
6. How to setup the saving path for snapshot picture and recorded video files?	20
7. How to playback recorded video in IE?	21
8. How to setup the saving path for recorded video and pictures in CMS 3.0 software?.....	23
9.How to playback in CMS3.0 Software?	25
11.How to operate in Cloud website?	28
12 How to reset password when you forgot?	31

1.How to do Digital Zoom in IE?

Select one target you wanna zoom in for more details, draw one block, as the red color block shown below:

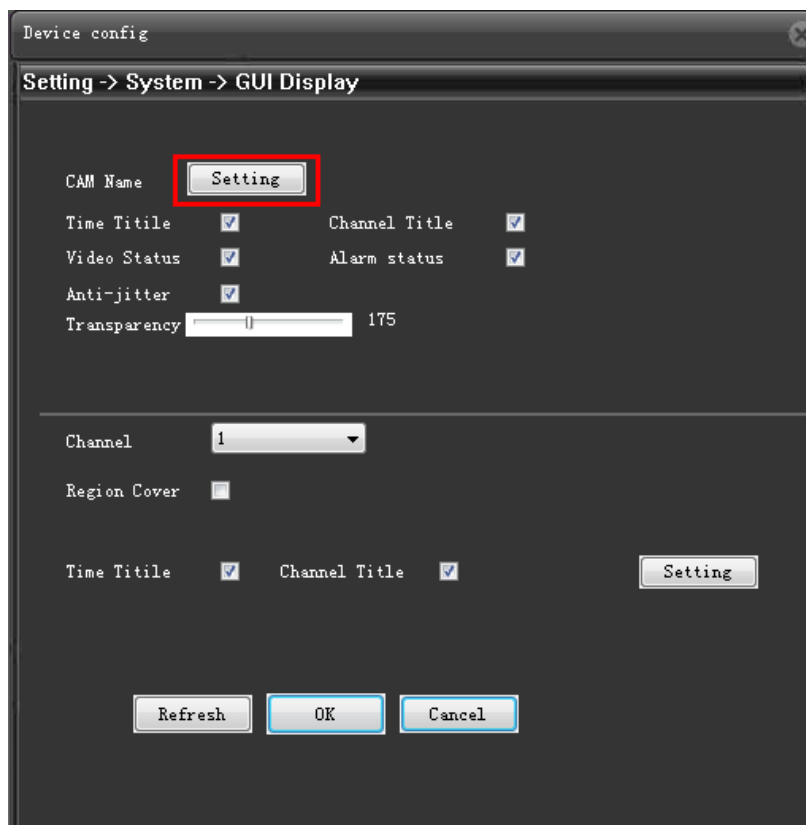


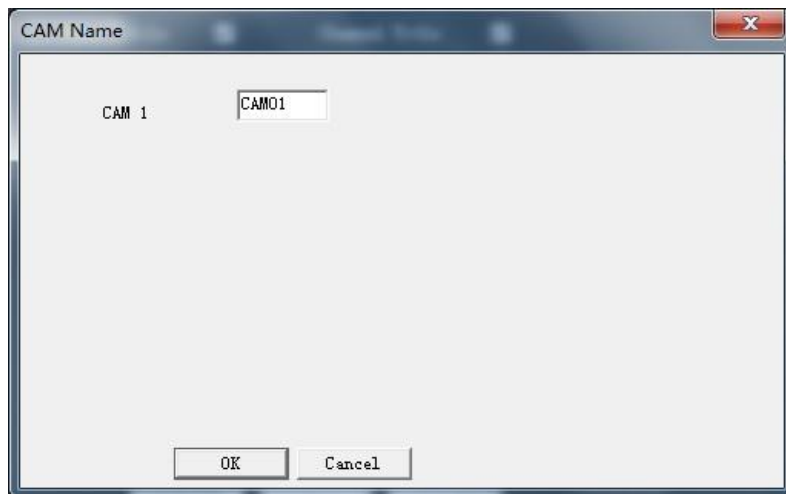
2. How to setup OSD in IE?

After you login IE, click **DeviceCfg**, and select , and then select **GUI Display**, as shown below:

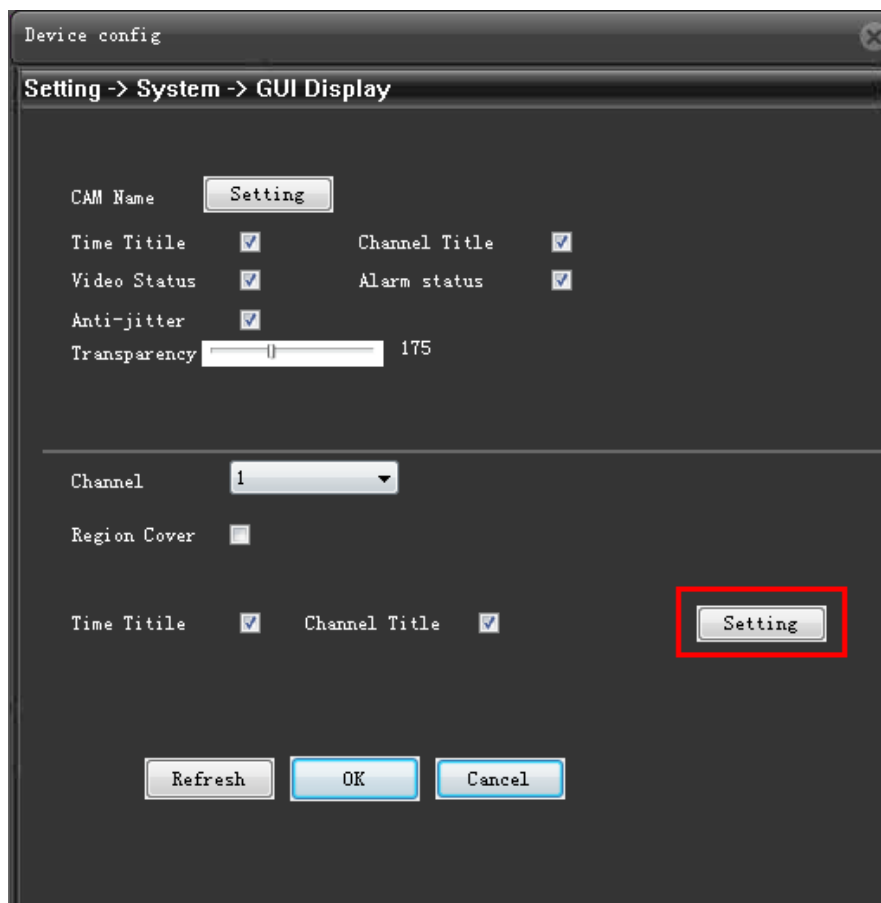


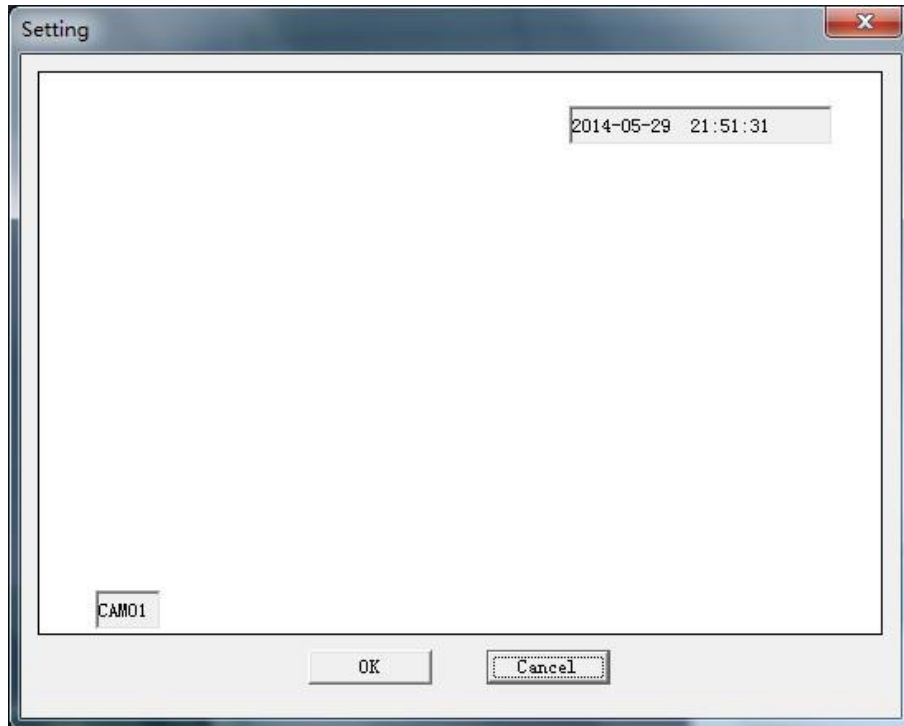
You can edit Camera name as shown below:





You can edit ""Time Tile" & "Channel Title" position as shown below:





3.How to setup Privacy Mask Area in IE?

After login in IE, click , select  and Select  option:



Setup Privacy mask Area shown below:

Device config

Setting -> System -> GUI Display

CAM Name

Setting

Time Titile

☒

Channel Title

☒

Video Status

☒

Alarm status

☒

Anti-jitter

☒

Transparency

175

Channel

1

Region Cover

☒

Setting

1

2

3

4

Time Titile

☒

Channel Title

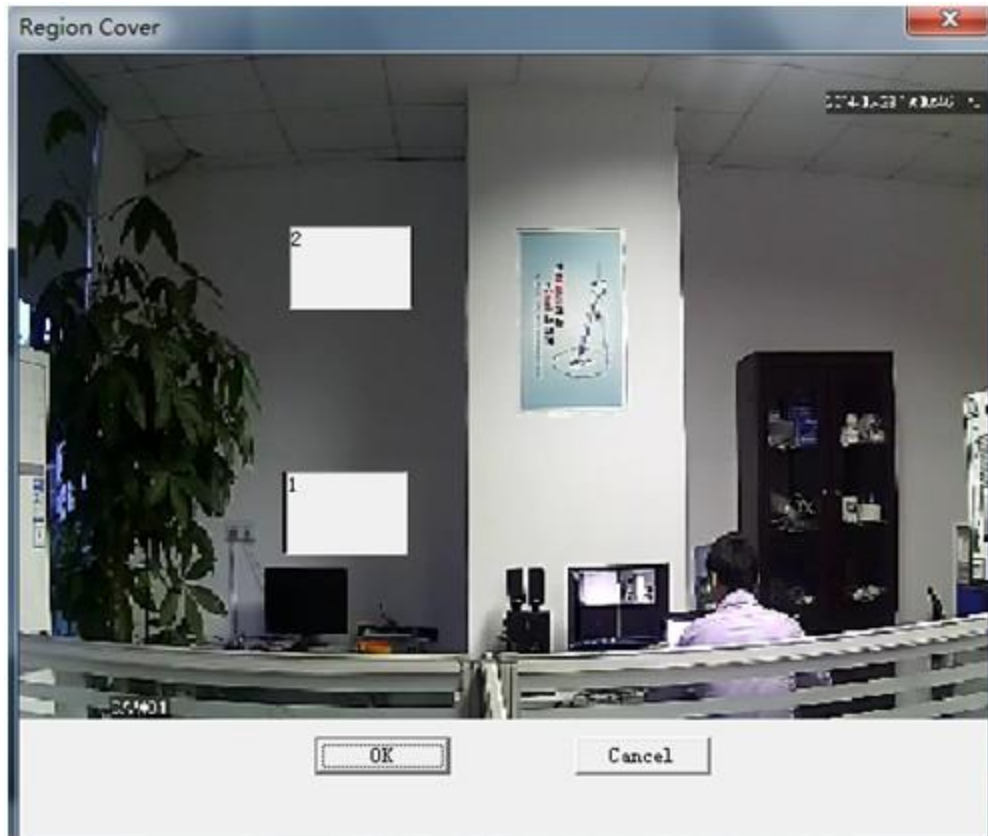
☒

Setting

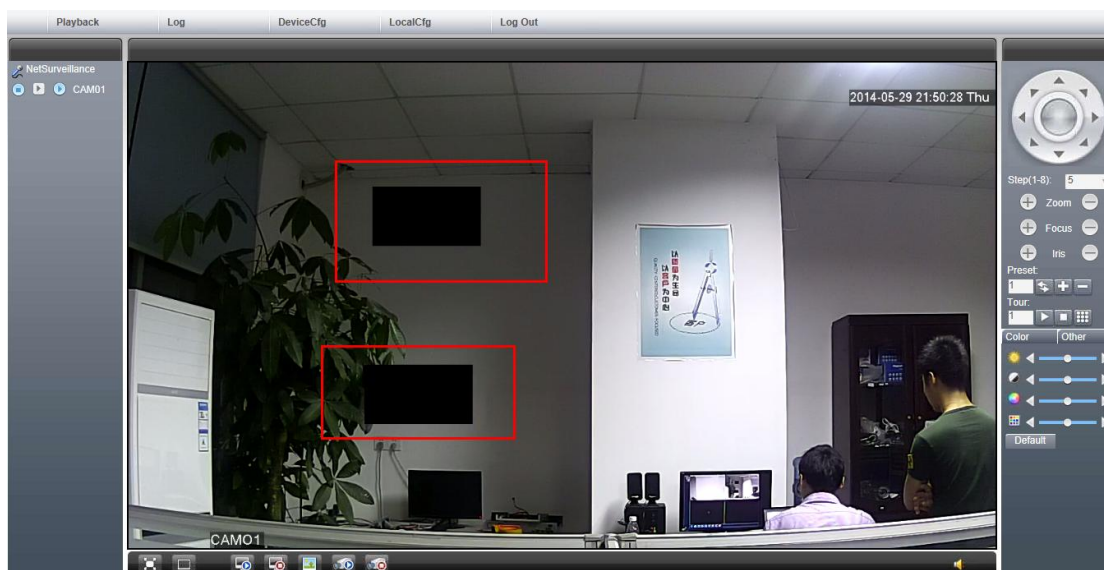
Refresh

OK



Cancel




Then you view the camera image as shown below:



4. How to setup Motion Detection in IE?

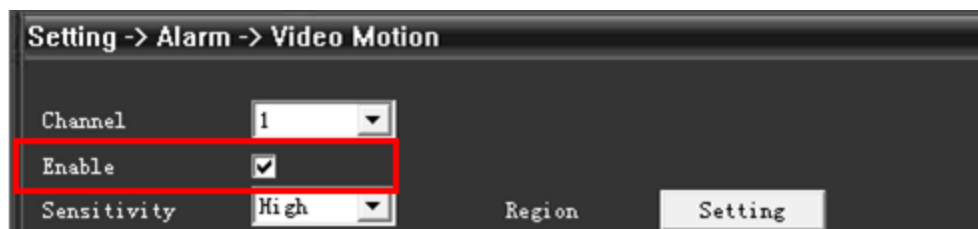
After login IE Click  in the top tool bar, and select  option, as shown below:



Click , as shown below:



4.1 Enable Motion Detectionoption

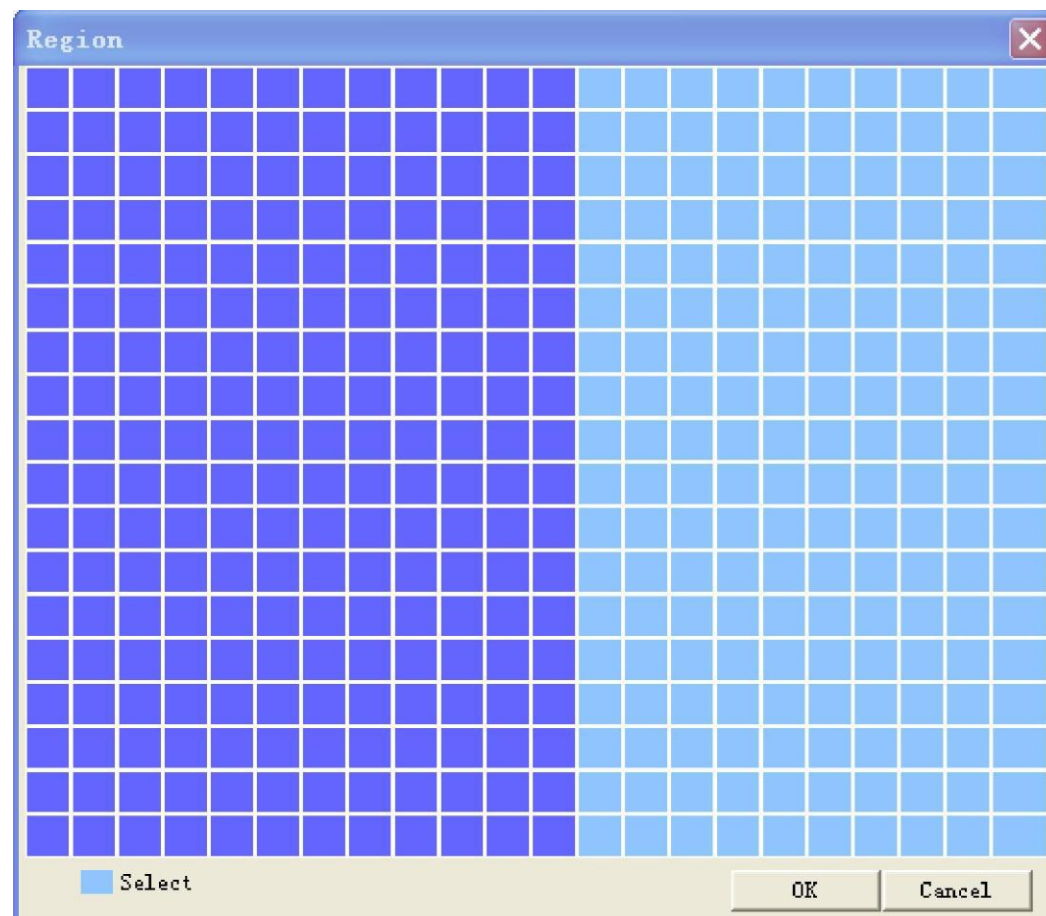


Setup Motion Detection Sensitivity

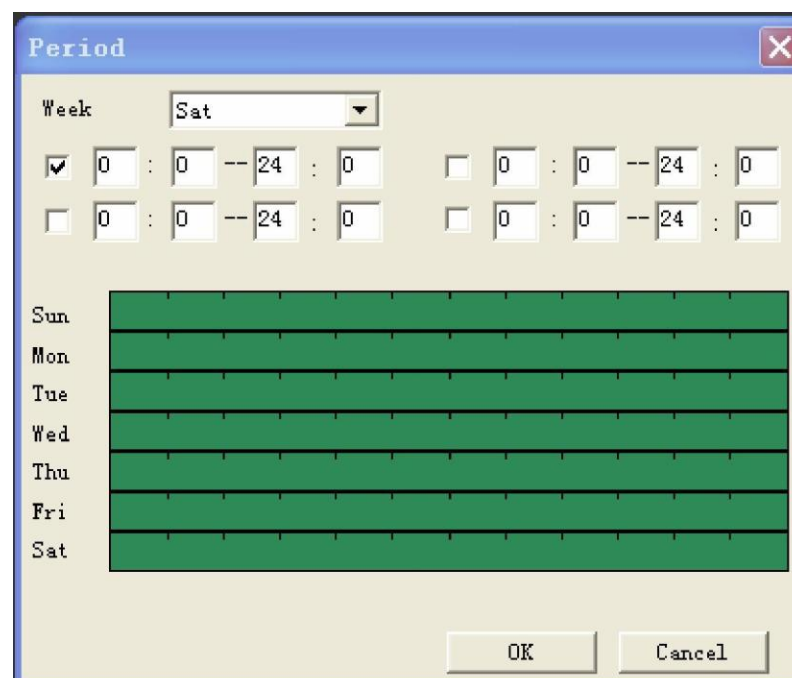
4.2 Setup Motion Sensitivity:

Lowest
Lower
Middle
High
Higher
Highest

4.3 Motion Region setup



4.4 Motion Period



4.5 Motion Detection trigger alarm output:

PTZ Activation Delay Sec

☒ Show Message ☒ Send Email

☒ Buzzer ☒ FTP

6.1.4.1 PTZ Action:

PTZ Activation

CAM 1

6.1.4.2 Show Message

When enables Motion detection trigger "Show Message", it will pop up the below alarm window:

Log

☒ Alarm log ☐ Operate log

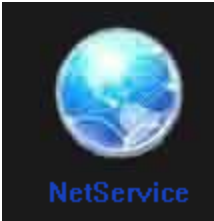
Type	Date	Time	Device	Channel
Video Blind	2014-05-29	21:16:00	63.67.55.88	CAM1
Video Blind	2014-05-29	21:15:58	63.67.55.88	CAM1
Video Blind	2014-05-29	21:15:56	63.67.55.88	CAM1
Video Blind	2014-05-29	21:15:55	63.67.55.88	CAM1
Video Blind	2014-05-29	21:15:53	63.67.55.88	CAM1
Video Blind	2014-05-29	21:15:52	63.67.55.88	CAM1
Video Blind	2014-05-29	21:15:50	63.67.55.88	CAM1
Video Blind	2014-05-29	21:15:48	63.67.55.88	CAM1
Video Blind	2014-05-29	21:15:46	63.67.55.88	CAM1
Video Blind	2014-05-29	21:15:45	63.67.55.88	CAM1
Video Blind	2014-05-29	21:15:43	63.67.55.88	CAM1
Video Blind	2014-05-29	21:15:42	63.67.55.88	CAM1
Video Blind	2014-05-29	21:15:40	63.67.55.88	CAM1
Video Blind	2014-05-29	21:15:39	63.67.55.88	CAM1
Video Blind	2014-05-29	21:15:37	63.67.55.88	CAM1
Video Blind	2014-05-29	21:15:35	63.67.55.88	CAM1

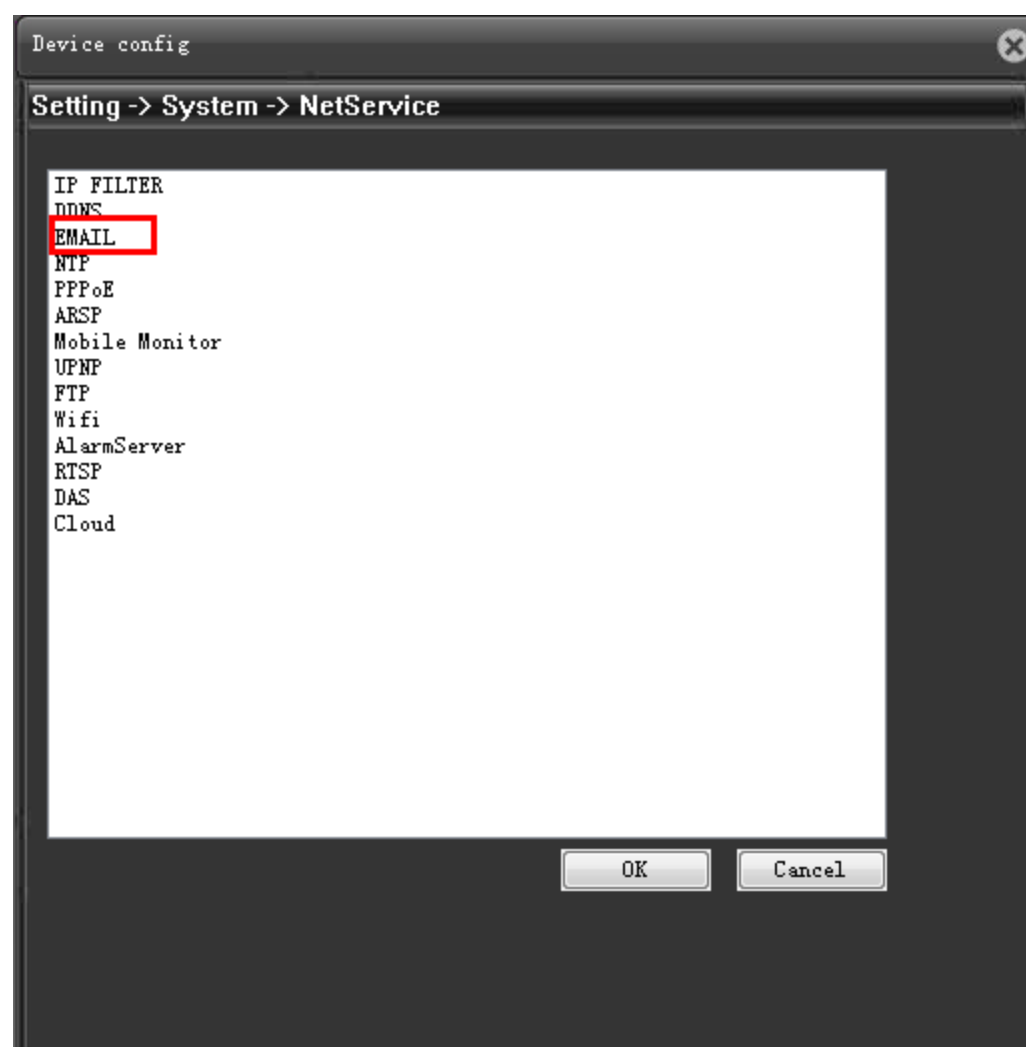
☒ Auto Prompt

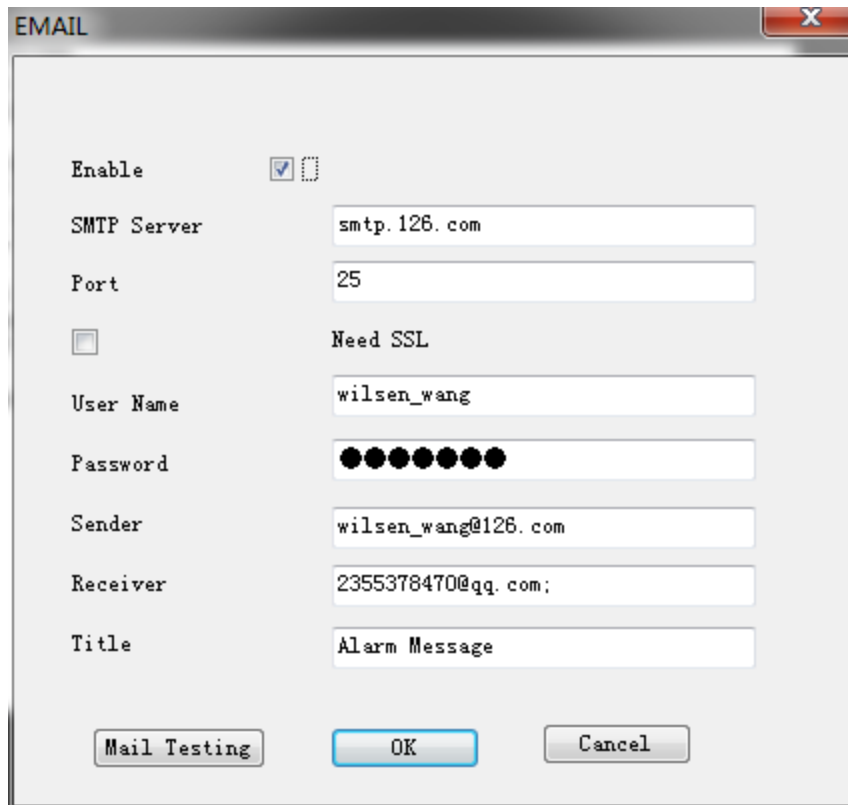
4.6 Motion Alarm Email Alert Setup

4.6.1 First do Email Sender setup



Select  and double click "Email" option



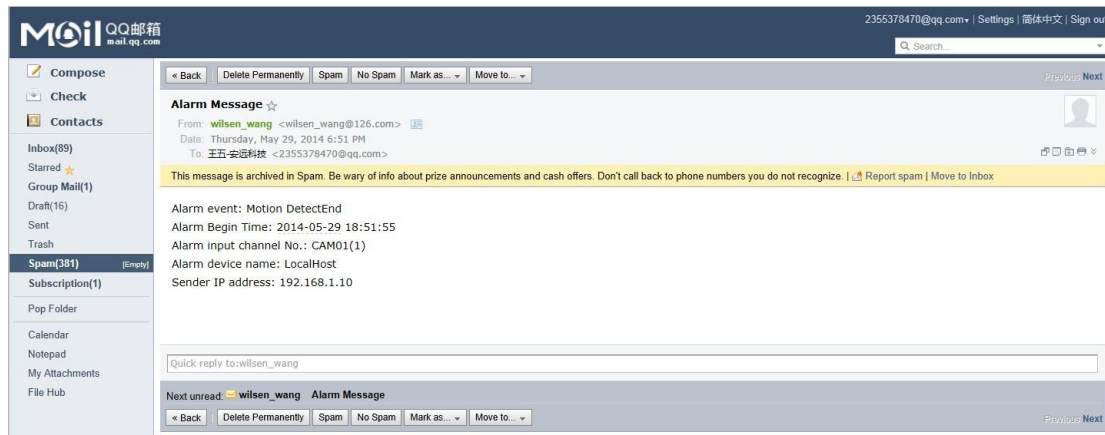


EMAIL configuration dialog box with the following fields:

- Enable:** ☒
- SMTP Server:** smtp.126.com
- Port:** 25
- Need SSL:** ☐
- User Name:** wilsen_wang
- Password:** [Masked]
- Sender:** wilsen_wang@126.com
- Receiver:** 2355378470@qq.com;
- Title:** Alarm Message

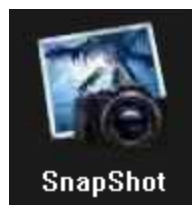
Buttons at the bottom: Mail Testing, OK, Cancel

Motion Alarm Email Alert, as shown below:



4.7 Motion Alarm Email Alert attached alarm snapshot

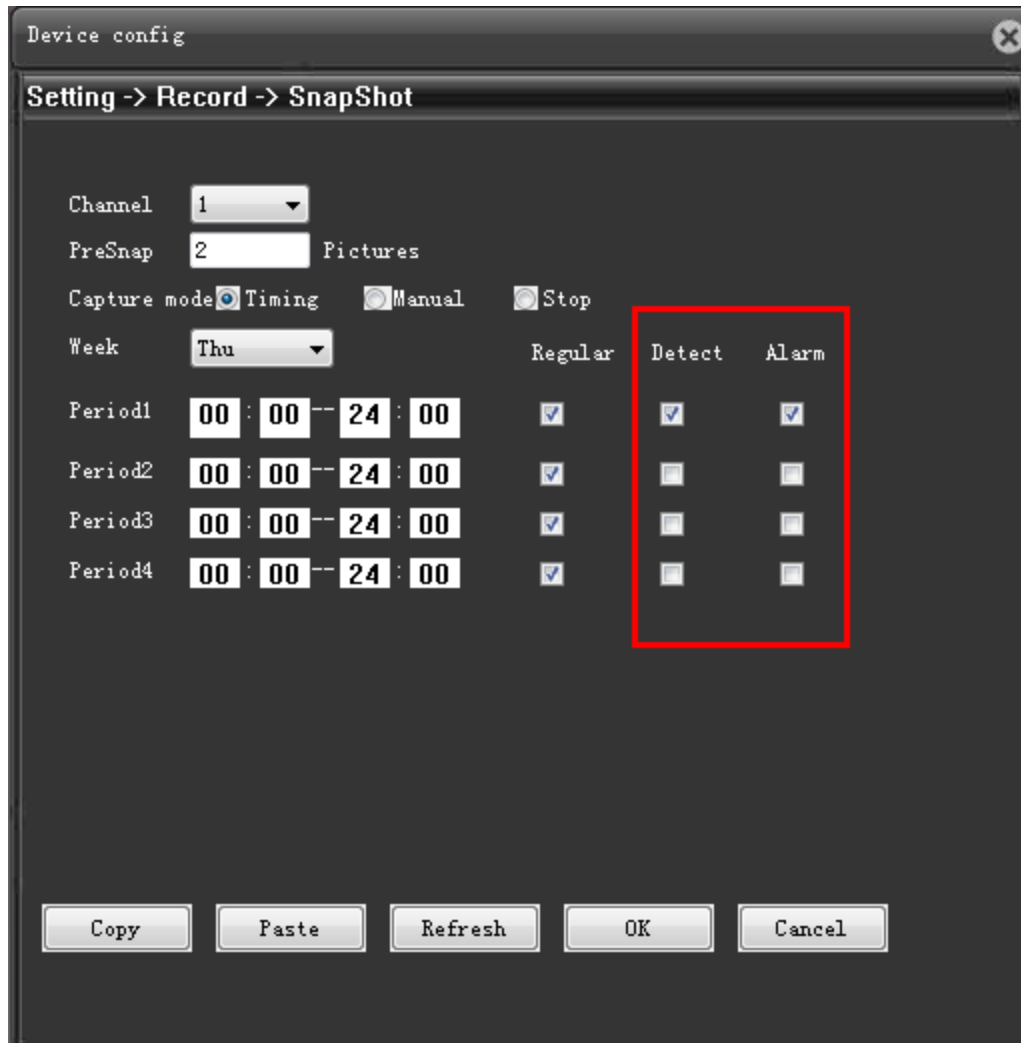
First you should setup alarm snapshot as below:



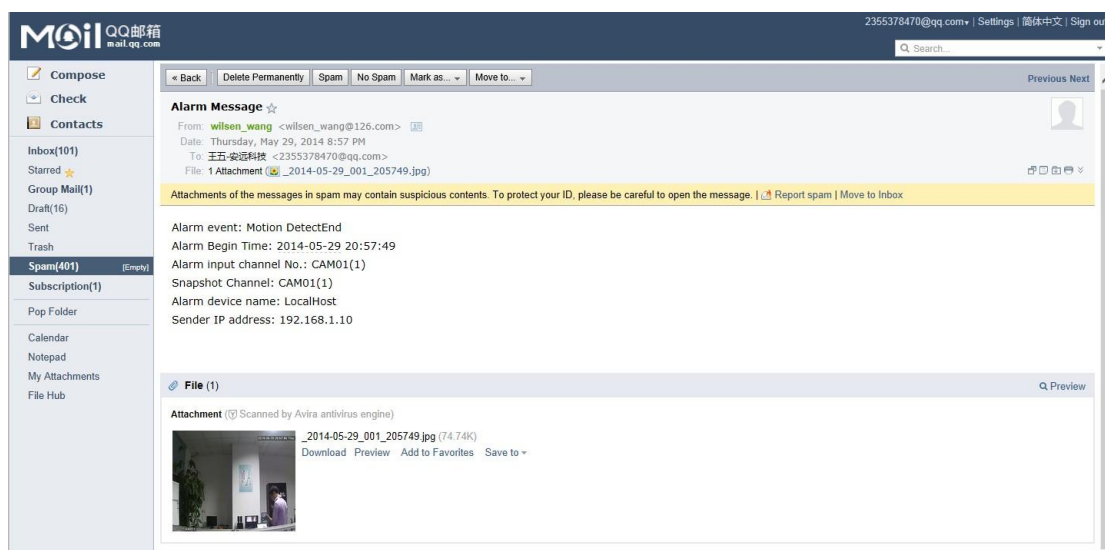
4.7.1 Select SnapShot option:



4.7.2 Setup Snapshot Alarm as below shown:



4.7.3 When motion detection happened, you will can the below Email alert attached alarm snapshot image.



5. How to Enable 3D Digital WDR in IE?

After login in IE, click **DeviceCfg**, select  and Select  **Camera param.** option:



Open DWDR as shown below

Device config

Setting -> System -> Camera param.

Channel 1

Exposure mode Automatic Minimum time 0.256000 Maximum time 65.536000 Millisecond

Day/Night mod Automatic BLC Close

Auto Iris Close Profile Automatic

AE Reference 50 Defaults 50

Dnc Threshold 30 DWDR Close Limit 50

AE Sensitivity 5 Image Open

AGC Open Limit 50

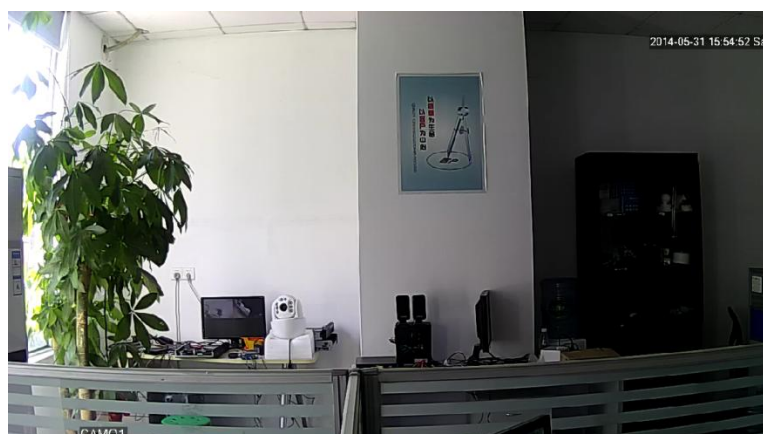
Slow shutter Low IR_CUT IR Synchronous Switc

DayNTLevel 3 NightNTLevel 3

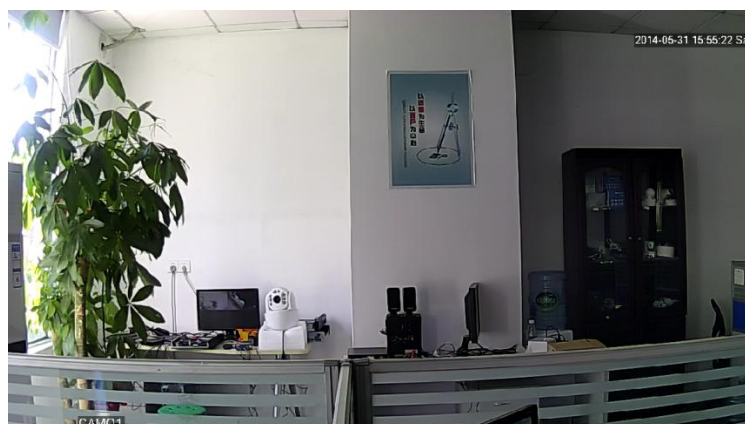
Front-end com Send Save

☐ Mirror ☐ Flip ☐ Anti ☐ IRSwap

Refresh OK Cancel






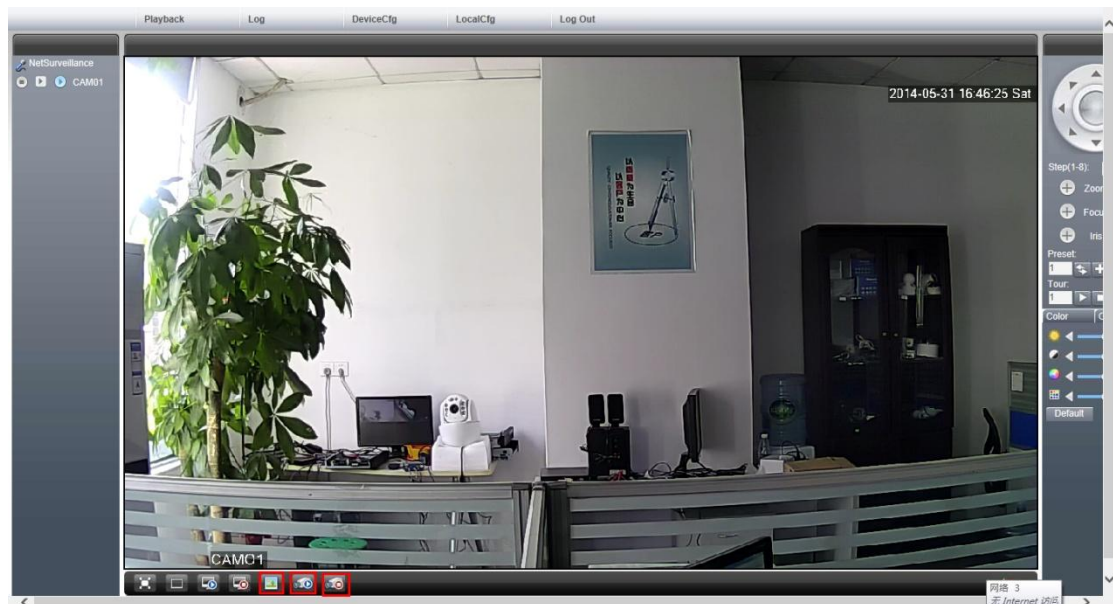
No DWDR Effect

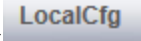



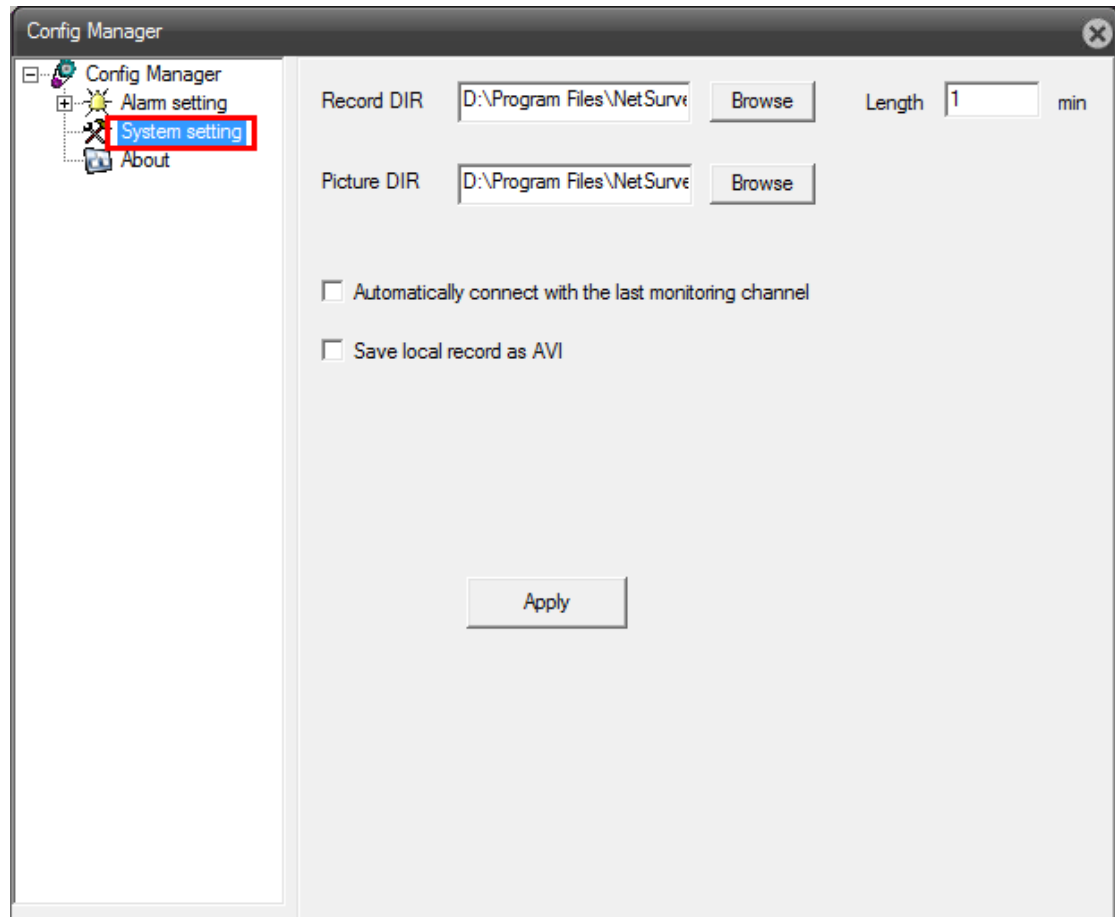
DWDR ON

6. How to setup the saving path for snapshot picture and recorded video files?

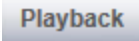

6.1 After login IE, at the bottom tool bar, click  means snapshot, click  means start all channel IP camera start recording, click  means stop recording.



6.2 Click , select  System setting setup the recorded video and snapshot pictures path as below:



7. How to playback recorded video in IE?

After login in IE, click  in the top tool bar, select "Local", and click  in the pop up player window, as shown below:

Playback

PlayBack

Local

Query Mode

Remote

Local

Type

All videos

Begin

5/31/2014

12:00:00 AM

End

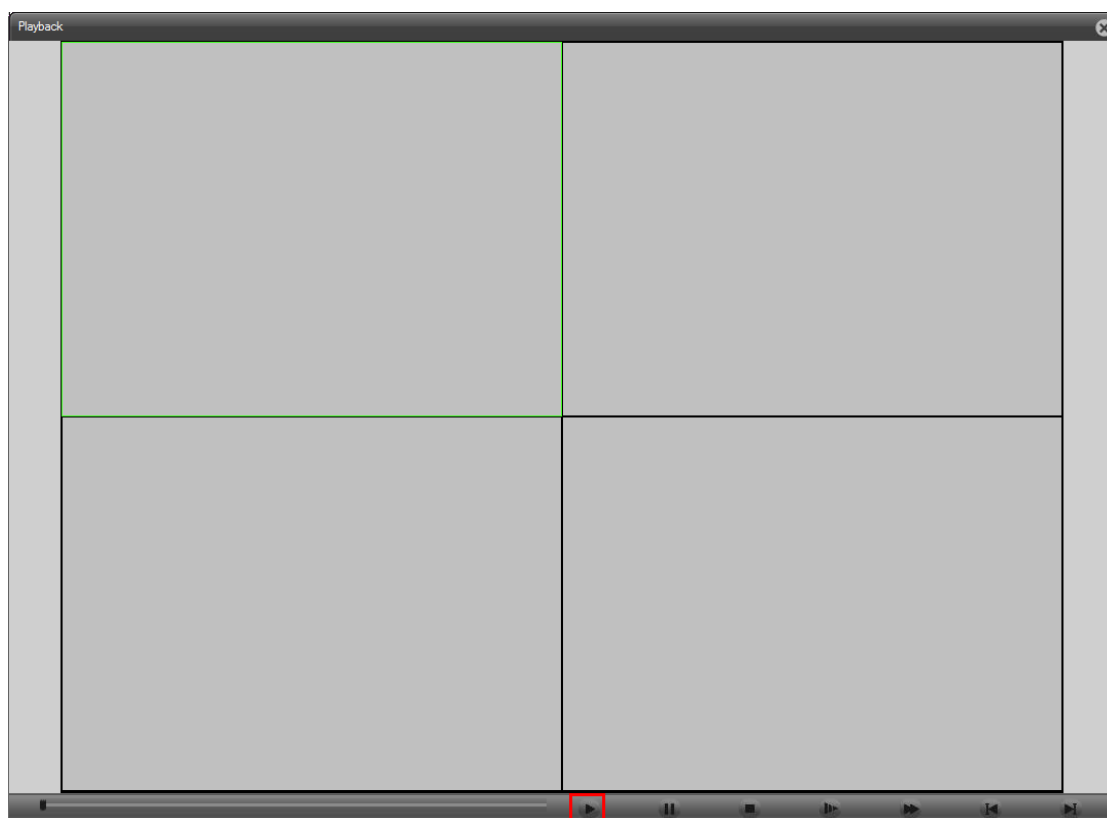
5/31/2014

11:59:59 PM

By Time

Local

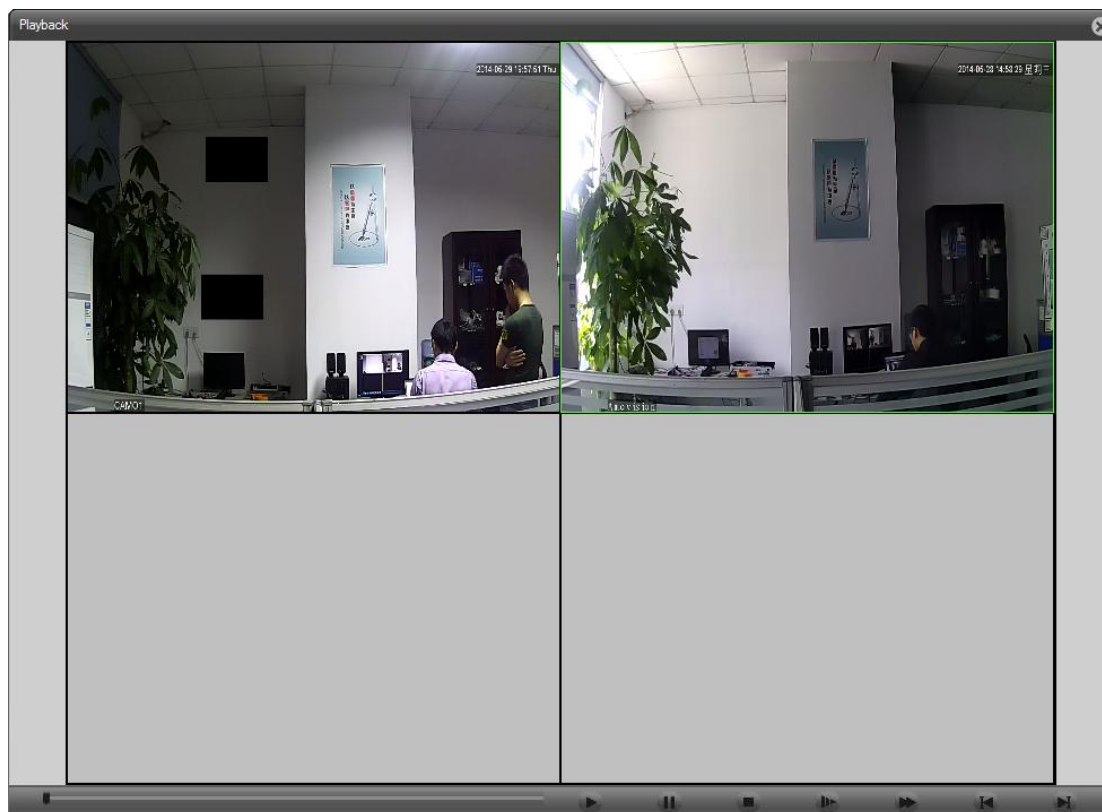
Cancel



Click , and select the recorded video file as the saving path.

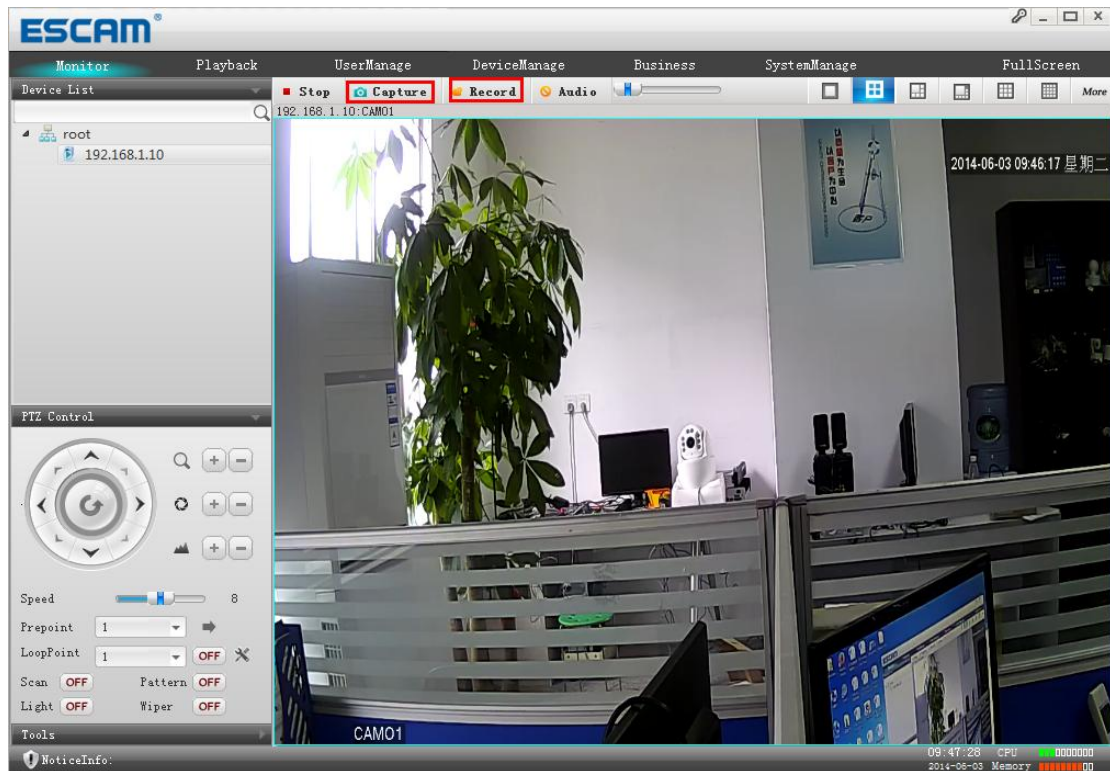
 1_20140529_195617.h264	2014-05-29 20:05	H264
 1_20140529_203427.h264	2014-05-29 20:34	H264
 01_20140528_145911.h264	2014-05-28 14:59	H264

Double click the selected option, then you can play the recorded video files as shown below:

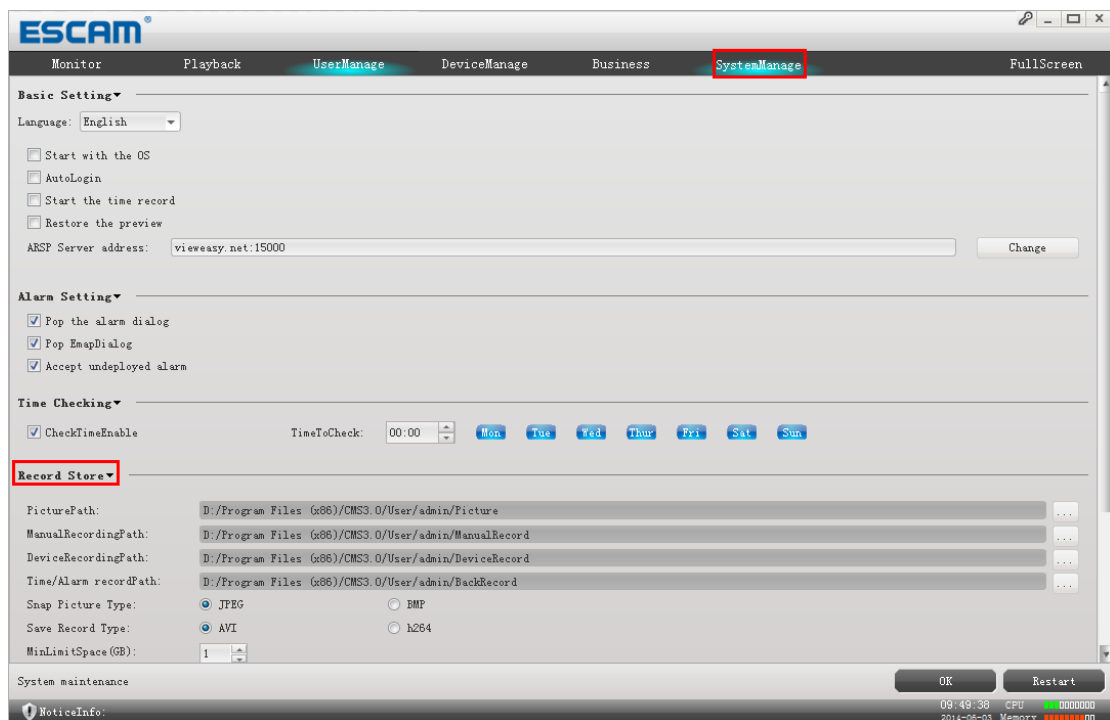


8. How to setup the saving path for recorded video and pictures in CMS 3.0 software?

8.1 After login CMS3.0 software, on the top tool bar, Click **Monitor**, select one IP camera image, click **Capture** means snapshot; click **Record**, the icon will turn to **Record**, it means IP camera start recording, click **Record** again, it means stop recording, as shown below:

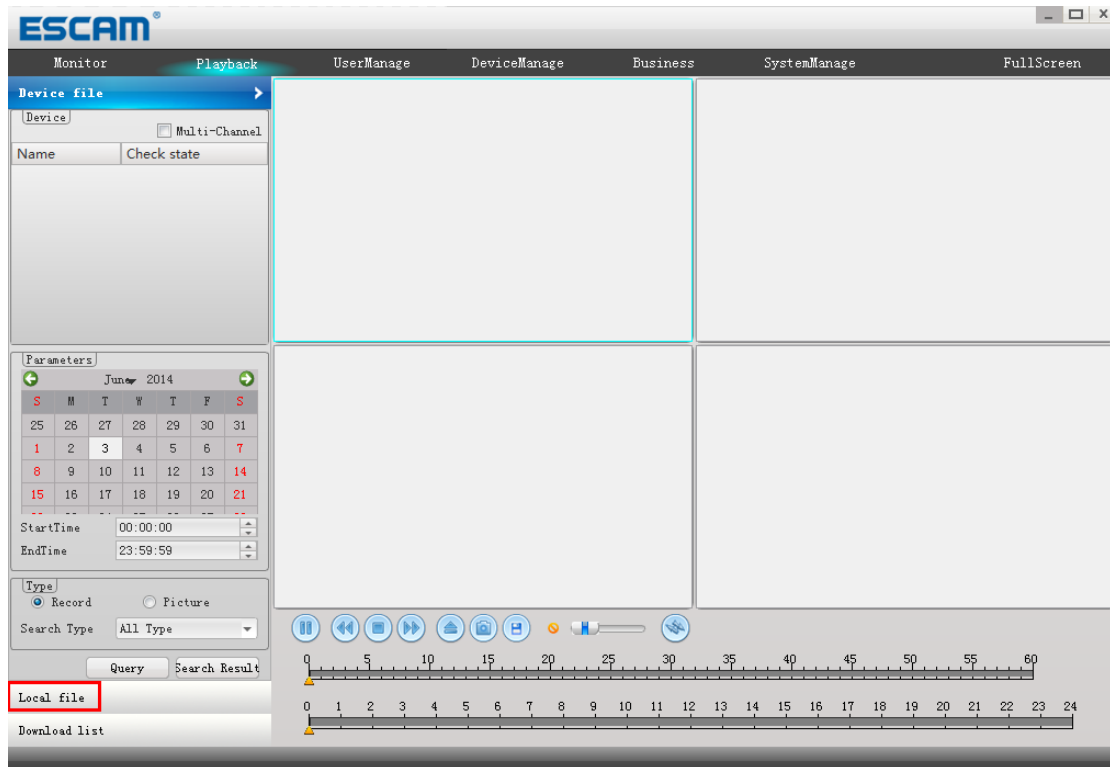


8.2 Click **SystemManage** and find **Record Store** setup the path as shown below:



9.How to playback in CMS3.0 Software?

9.1 Click **Playback** and select **Local file** as shown below:

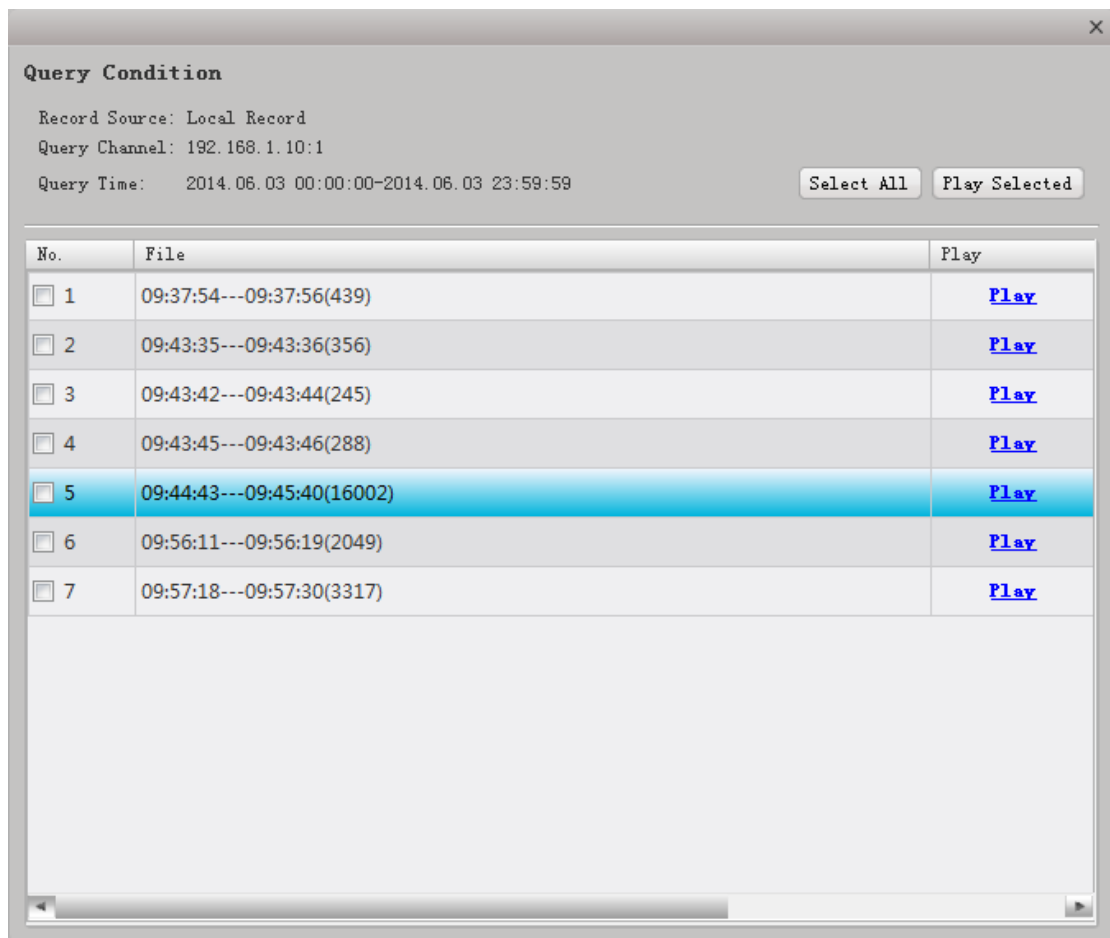
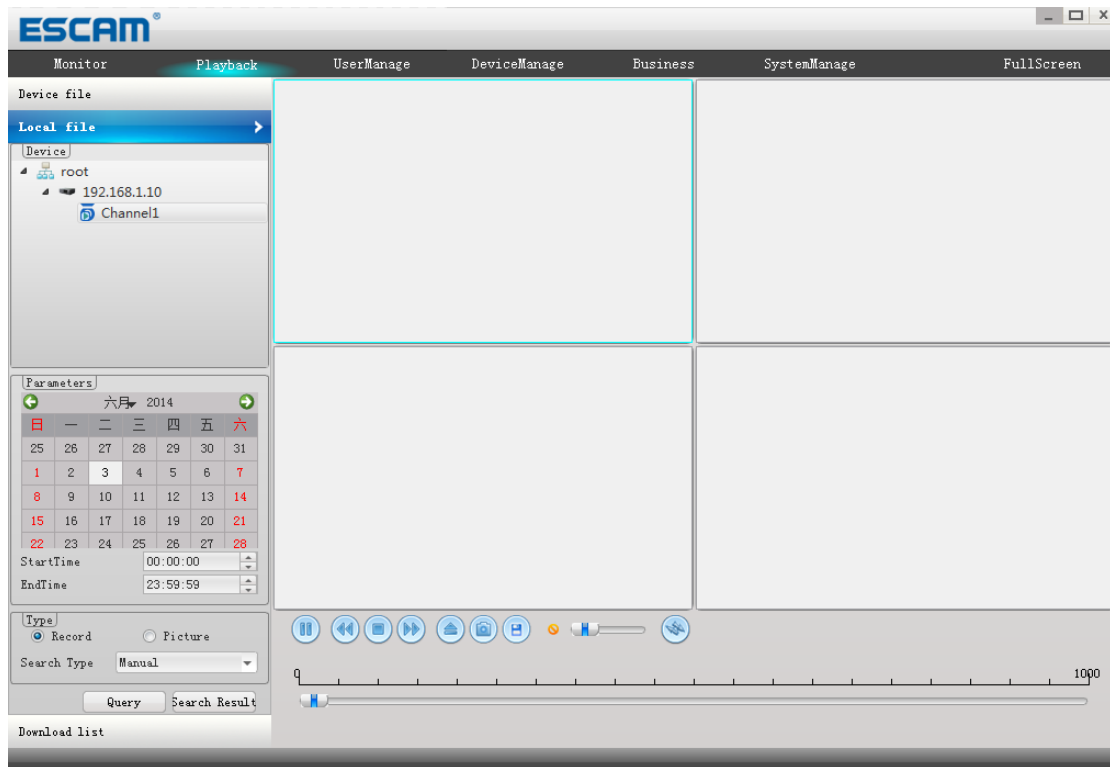


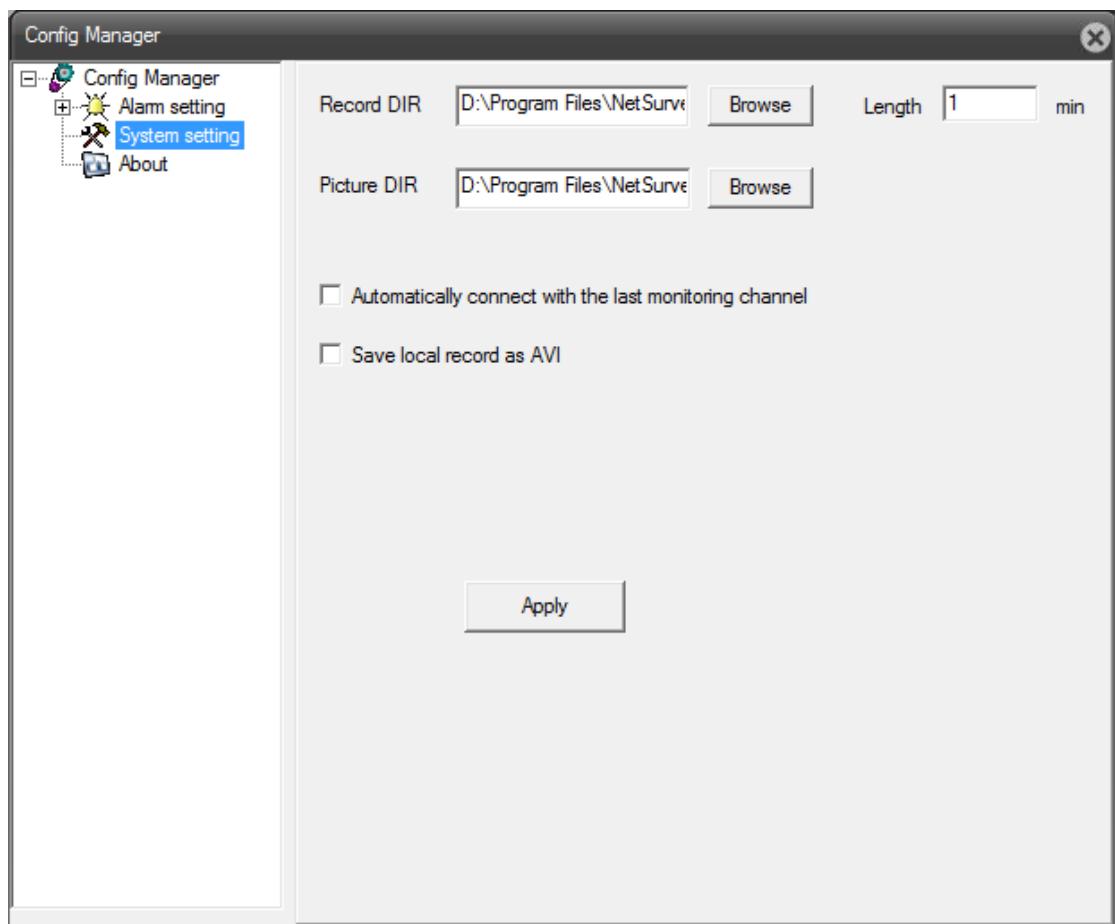
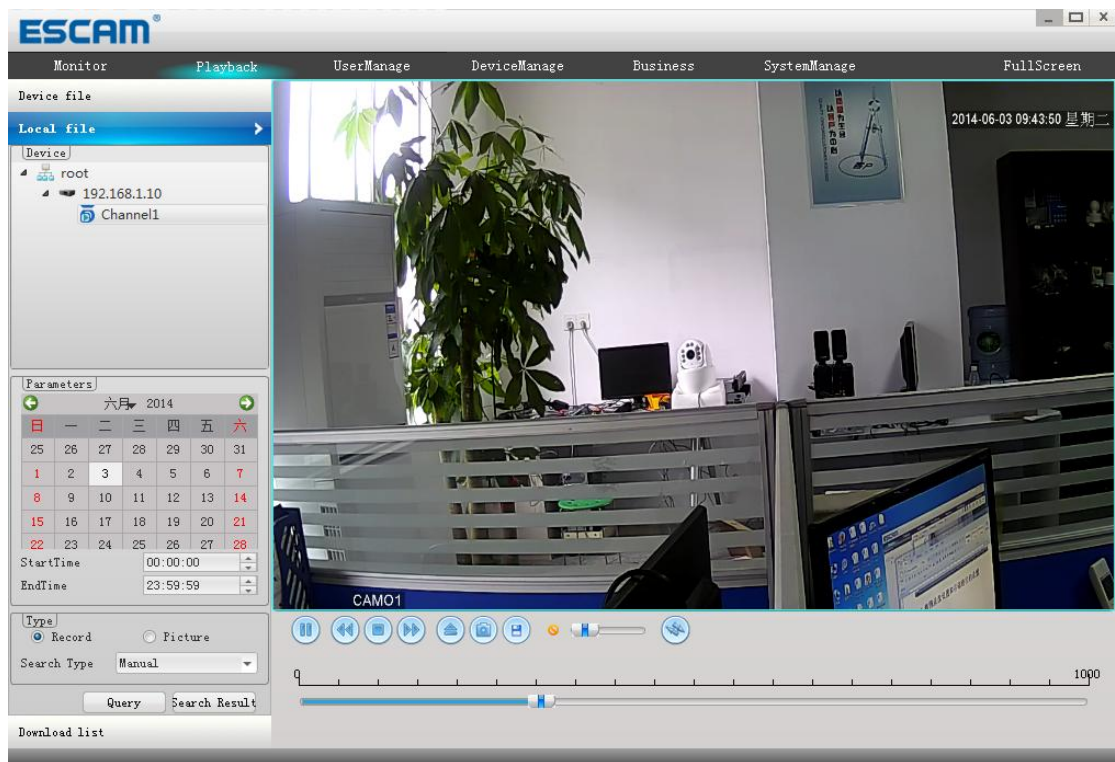
9.2 Select one IP Camera which you wanna playback its recorded video

9.3 Select record type in "Search Type":



Such as select "Manual", click **Query** and click **Search Result**, select one video file to play back, as shown below:





11.How to operate in Cloud website?

The cloud website is :<http://xmeye.net>, as shown below:



7.1 By user



7.1.1 Click "Register" to register one account, input the info as shown below:

Username	<input type="text" value="QDIPC002"/>
True Name	<input type="text" value="QDIPC002"/>
Sex	<input type="text" value="Male"/> ▼
Contact	<input type="text" value="QDIPC002"/>
Address	<input type="text" value="Shenzhen China"/> x
E-mail	<input type="text" value="davis8801@gmail.com"/> (You can get your password back by the E-Mail)
Password	<input type="password" value="•••••"/>
Confirm	<input type="password" value="•••••"/>
<input type="button" value="Ok"/> <input type="button" value="Cancel"/>	

7.1.2 Add IP camera under your account:

Select "Device Manage", click "add" button to add IP camera as below:

SerialNo.	<input type="text" value="a47790635e72b1e8"/>
Device Name	<input type="text" value="QDIPC"/>
Username	<input type="text" value="admin"/> (default is "admin")
Password	<input type="password"/> (default is null)
<input type="button" value="Ok"/> <input type="button" value="Cancel"/>	

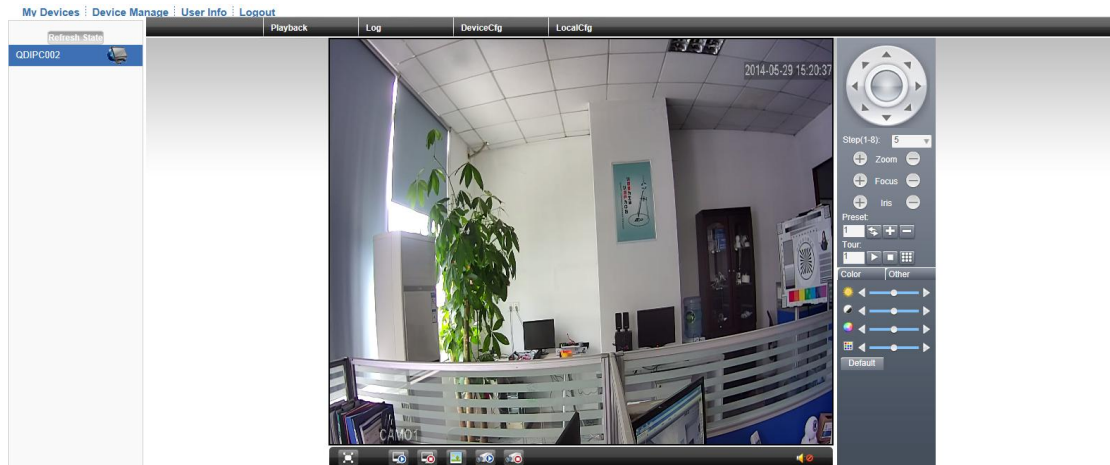
7.1.3 Preview IP Camera in Cloud website:

Double click **QDIPC002** , select "main Stream/Extra Stream"

Bit Rate Type

☒ Connect all video(Main Stream)
☐ Connect all video(Extra Stream)
☒ Auto Prompt

Then you will see the IP camera image as shown below:



7.2 By Device

By User
By Device

Login And Preview

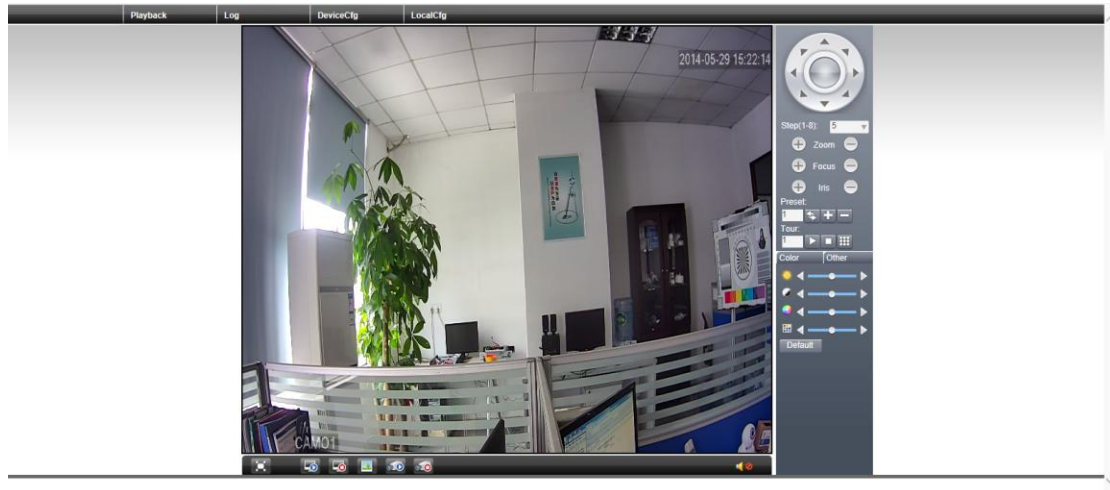
id
a47790635e72b1e8

verify
5661
5661

Login
Enter Guide

Please Click "Enter Guide" if you visit first

Input the P2P ID and verify code, click "Login", then you can get below image



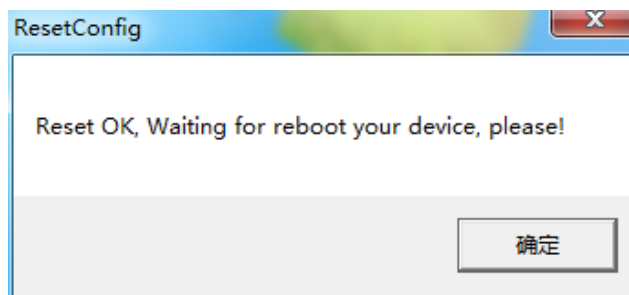
12 How to reset password when you forgot?

12.1 Running the tool  ResetConfig inside the CD

12.2 Input the IP address, click



12.3 After succeeded tips, please reboot the IP camera



12.4 the IP address user name and password will reset to the default:

IP address:192.168.1.10

Password: No Password



*NOTE:


1. If under Windows XP OS, you can do alike above
2. If under Windows7/win8OS, you need to open telnet

13 How to playback the H.264 Video file recorded from IE?

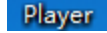
*NOTE:

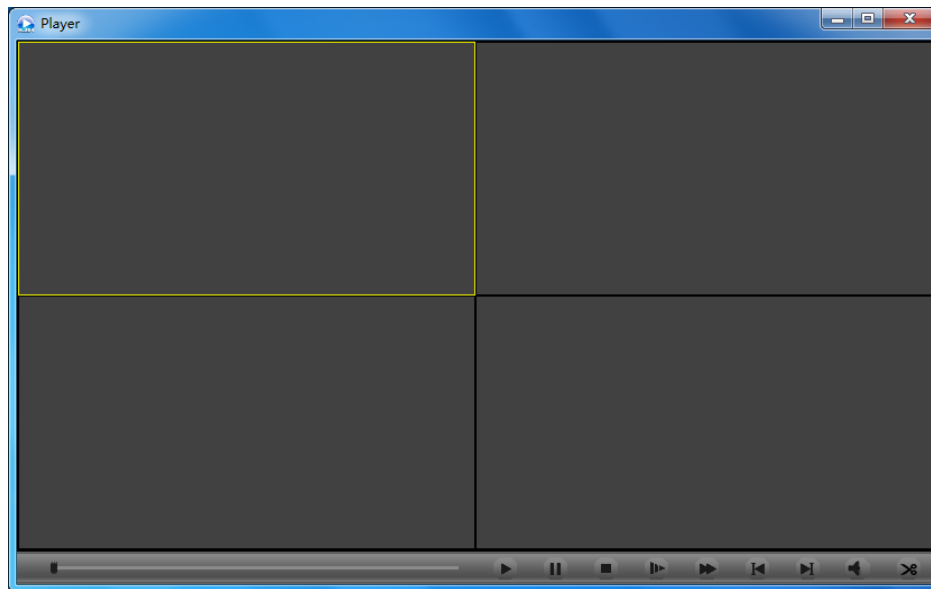
Manully record the video in IE, it will have two video format: H.264 and AVI.


If you need to playback the H.264 Video file, you should use the below player.


1. Open the CD and install  General_Player_V1.6.0.2.R.20140317



2. Double click  to open the player.



3. Click , and select the recorded video file as the saving path.

	1_20140603_110522	6/3/2014 11:05 ...	H264 文件	2,485 KB
	1_20140603_110531	6/3/2014 11:05 ...	H264 文件	2,891 KB

4. Double click the selected option, then you can play the recorded video files as shown below: